



**Capital**  
Mailing Equipment Inc.

4 COLOR  
PRINTING



# FC108 CMYK Color HP 4.0 Thermal Inkjet

## FEATURES

- ◆ Full Color CMYK TIJ 4.0 Print Technology
- ◆ 4.25" to 8.5" Print Height
- ◆ 1200 dpi Print Quality
- ◆ Advanced Micro-Recirculation
- ◆ Up to 500 ft per minute
- ◆ Small Footprint

11701 Metro Airport Center Dr, Suite C-101,  
Romulus MI 48174  
info@CapitalMailingEquipment.com



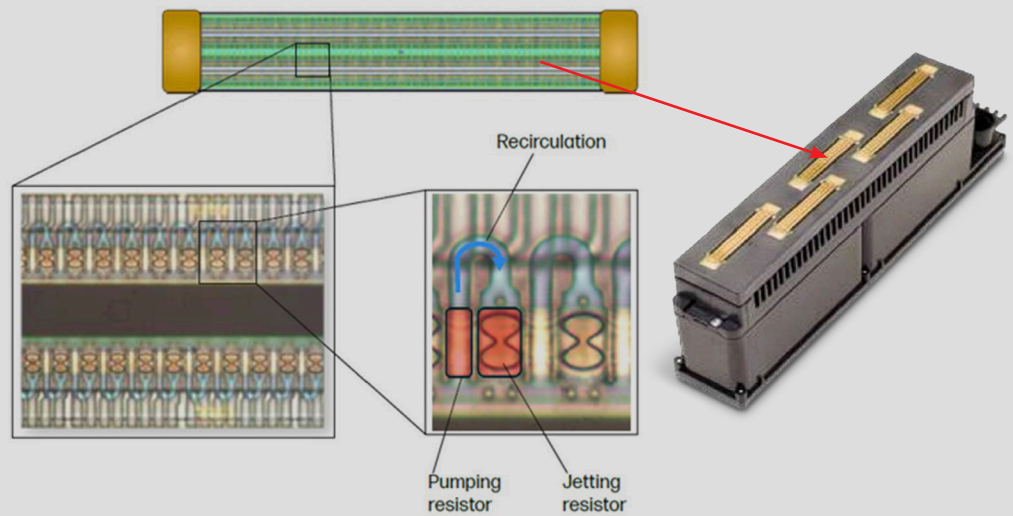
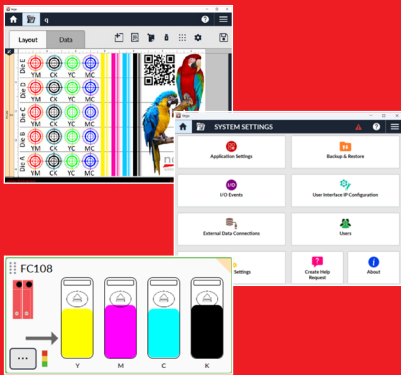
CapitalMailingEquipment.com  
833 263-6245

## ***HIGH SPEED... HIGH RESOLUTION... CMYK***

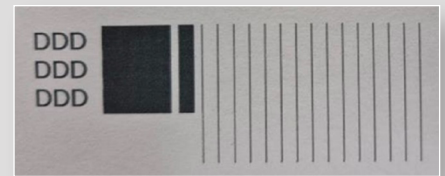
The FC108 delivers cost-effective, high-quality, variable color printing for a wide range of applications. From packaging, coding and marking, and mailing to graphics, barcodes, 2D codes, and unlimited customization, the FC108 is built for flexibility. Its compact design fits easily into production environments while still offering print widths of up to 8.5" when using two heads. With a simple design and HP's Micro-Recirculation technology, the FC 108 keeps maintenance minimal and uptime high.

### ***INTUITIVE SOFTWARE***

The FC108 is powered by Norwix's Vega soft-ware—designed to be incredibly easy to use from day one. Its intuitive interface allows operators to create, edit, and run jobs with minimal training, reducing setup time and eliminating complexity. Despite its simplicity, Vega seamlessly connects to external systems, pulling data in real time from remote databases and packaging equipment.



Without Micro-Recirculation



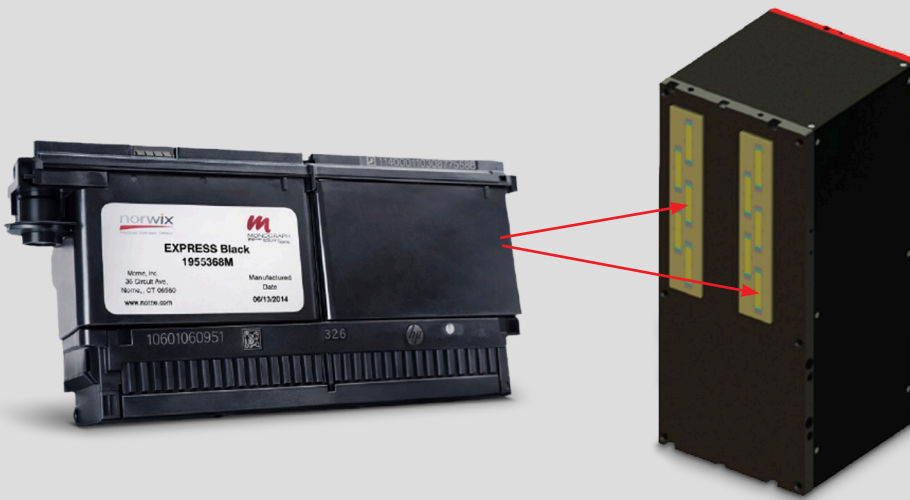
With Micro-Recirculation

## ***DECAP ISSUES AND HARSH ENVIRONMENTS? SOLVED MICRO-RECIRCULATION***

The FC108 printhead features integrated recirculation by using dedicated thermal micropumps for each nozzle instead of an external system. By firing specific resistors to create a circular flow within U-shaped ink channels, the technology ensures a continuous supply of fresh ink past every nozzle. This Micro-Recirculation eliminates moving parts and prevents nozzle clogging or defects, even after extended idle periods.

## UPGRADE TO THE LATEST TIJ 4.0 TECHNOLOGY

HP TIJ 4.0 technology represents a major advancement in industrial printing—delivering high-speed capability, exceptional print quality up to 1200 DPI, and the proven reliability of HP's trusted platform. Designed for bulk ink operation, TIJ 4.0 ensures consistent performance, maximum uptime, and efficient, low-maintenance production. Its versatility makes it ideal for a wide range of industrial applications, including packaging, coding and marking, mailing, and graphics. The FC108 harnesses the full power of HP TIJ 4.0 in a compact, easy-to-use system, it delivers high through-put, outstanding print quality, and dependable operation in demanding production environments. The FC108 enables true CMYK color output in a single pass—unlocking unlimited possibilities for branding, customization, and high-impact imaging.



### USER APPLICATIONS:

- ◆ E-commerce
- ◆ Direct to product
- ◆ Mailers
- ◆ Labeling
- ◆ Regulation markings
- ◆ Pharma / Medical
- ◆ Personalization
- ◆ Paper bags
- ◆ Case coding



## NEW CARTRIDGE = NEW PRINT HEAD

With HP TIJ 4.0's quick disconnect (QD) cartridges each cartridge replacement effectively delivers a brand new, integrated printhead. This ensures consistent print quality without the need for calibration, tools or complex servicing. The QD cartridge takes just seconds to replace insuring easy of use for operators. Anyone that's operated traditional industrial printer knows that over time things happen to printheads, nozzles get clogged or damaged and eventually print quality deteriorates. No more... With each change of HP's QD cartridges, you get a fresh print head. It's day one print quality no matter how old the print system is.



**Capital**  
Mailing Equipment

## **FC108—PERFORMANCE**

Characteristic	Max Speed	
	ft/min	m/min
Resolution (DPI)		
600	500	91
1200	300	45

Characteristic	FC108
Print Width	108mm–216mm
Maximum Resolution	600 dpi
Drops Size	7 pl
Jetting Frequency	36kHz
Throw Distance	Up to 7mm*
Nominal QD life	15L (Application Dependent)

<b>Printable Items</b>	Lot Codes, Date codes, Alphanumeric, Barcodes, Bitmaps, PDF
<b>Bar-code Printing</b>	EAN-13/EAN 8, UPC-A, Code128, ITF-14, ITF-2of5, Code39, Cryptocode, GS1 Datamatrix, QR (114 barcode support included)
<b>Print Density</b>	User Configurable (12.5% - 100%)
<b>Umbilical Length</b>	3m
<b>Ink Type</b>	Aqueous ( Black and CMYK )
<b>Bulk Solution</b>	( 4 ) 775ml Bulk Supply
<b>Electrical Interface</b>	Ethernet, I/O, Sensor, Encoder, Stack Light
<b>Voltage</b>	115V to 240V
<b>Languages</b>	English, Spanish, German, French, Korean, Chinese, Portuguese
<b>Data File Support</b>	CSV, TXT, MDB, XLS, XLSX, ACCDB
<b>Daisy Chain</b>	Daisy Chain multiple to build larger systems
<b>Communications</b>	1GB Ethernet

## **DIMENSIONS**

